



works

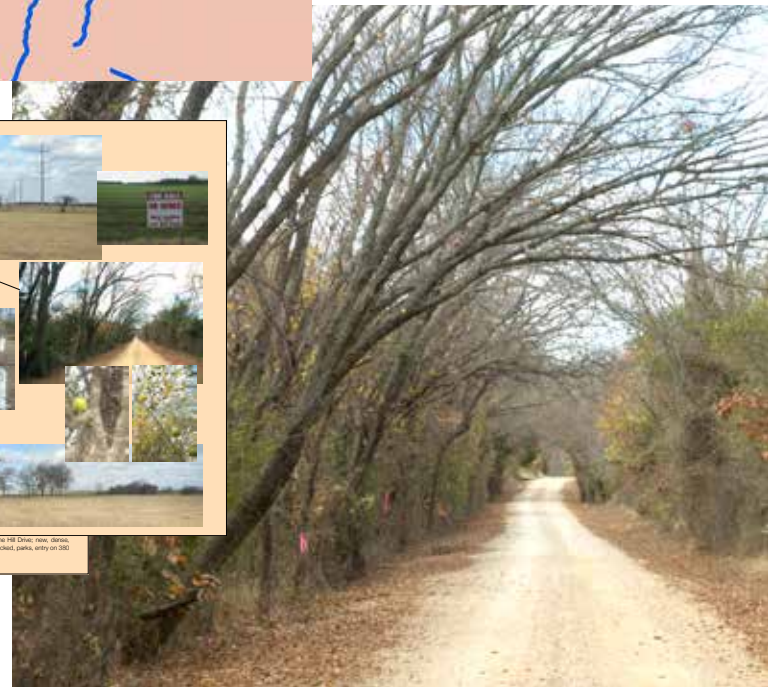
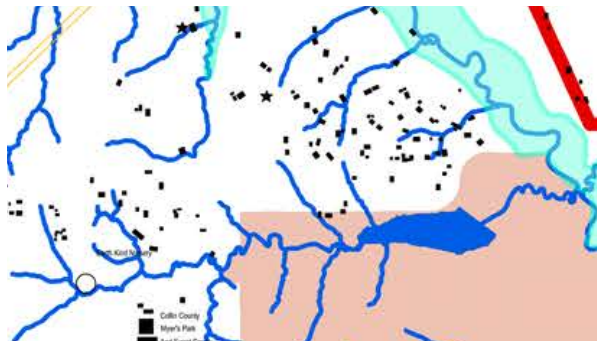
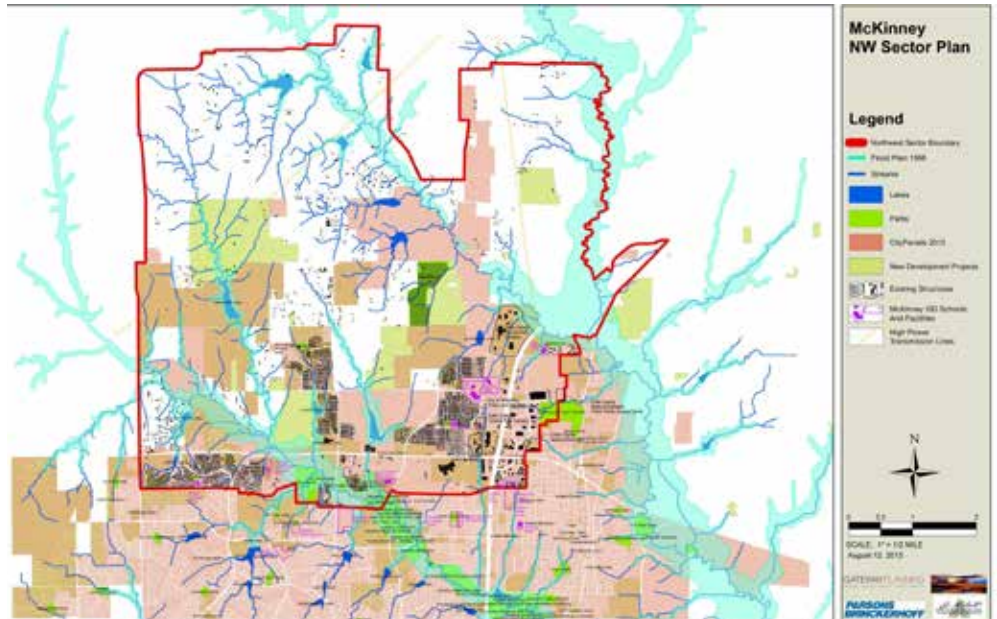


The City of McKinney selected the team of Parsons Brinckerhoff, Gateway Planning, and Vista Planning & Design, with other consultants to complete an analysis of 35,000 acres of land that is the high growth region of the City. This area is comprised of both Full Purpose and ETJ areas of McKinney's jurisdiction.

Vista Planning & Design developed on the ground analysis and site assessment to inform the rest of the team in planning growth strategies. Seen in the images here are the assessment work compiled in a report and Vista's analysis of existing structures on the ground coupled with a general value assessment. This work led the team leaders in discerning which lands within the study area were "in play" for controlling development patterns and which lands were already patterned by virtue of existing, high-value land development. Other features identified were cemeteries, public and private parks, commercial operations, and religious facilities.

# McKinney, Tx NW Sector Plan

## City of McKinney, Texas



Tucker Hill just east of Stone Hill Drive, new homes, nice and high value, ally backed, parks, entry on 300